



# ***DELFIN CHANGELOG***

## **VERSION 8.97**

Release Date: 24/03/2021

**DELTER**

A DIVISION OF ALTRON

## CHANGES FROM VERSION 8.96

### Updates:

- ≈ Fixed an issue where a user can add an affordability item with no description.
- ≈ Fixed an issue where a user can delete a nationality in the setup if it is linked to a client.
- ≈ Fixed an issue where a user could not delete an insurance type after it was created in the setup.
- ≈ Fixed an issue when granting or revoking all permissions with the icons (👤 🗑️) on a user, not all permissions was granted or revoked.
- ≈ Fixed an issue which allowed the creation of a loan purpose without a description in the setup.
- ≈ Fixed an error message that was returned when sending an email from the Dokuments tab on a client's profile and there is no email configuration for the branch in the setup.
- ≈ Fixed an issue on the Local PC Setup & Setup permissions for printers, where the system loaded the Printer tab first if the user did not have Setup permissions for it.
- ≈ Modified the NuPay's DebiCheck registration call to include the employer code.
- ≈ Modified the Paypoint Transaction Grid report to include sub totals for groups.
- ≈ Modified the Loan Status report to enable the selection of all statuses if the use of loan status is deactivated in the setup.
- ≈ Modified certain Insurance integration functions to use TLS 1.2.
- ≈ Modified procedures for the Form 39 on the number (count) of applications rejected for HDP's on the Summary, Unsecured and Short-Term pages accordingly.
- ≈ Modified the procedure to check for the maximum capital limit to allow the creation of a R100,000,000.00 loan.

## New Features in 8.97

### 🔗 DebiCheck Permissions

Added permissions for DebiCheck TT1 transactions to the current Loan type permission set "Status" and renamed the label to "Status and DebiCheck loans", as per figure below:

☐ Status and DebiCheck loans		
Decline		✘
Approve		✘
Payout		✘

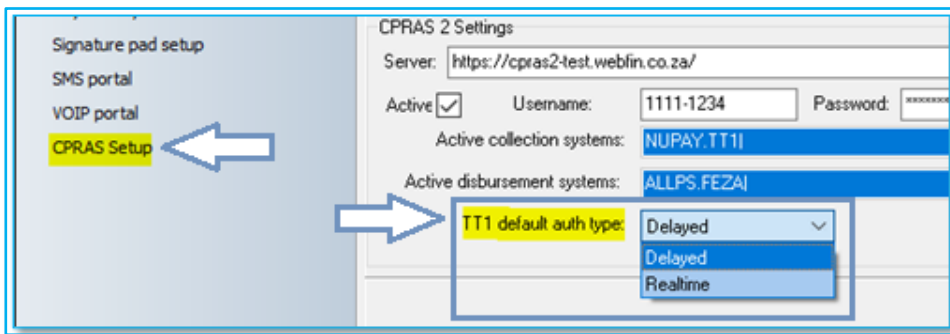
Standard loan statuses and DebiCheck loans will now use the loan type permissions set per user.



## NuPay DebiCheck TT1 Realtime

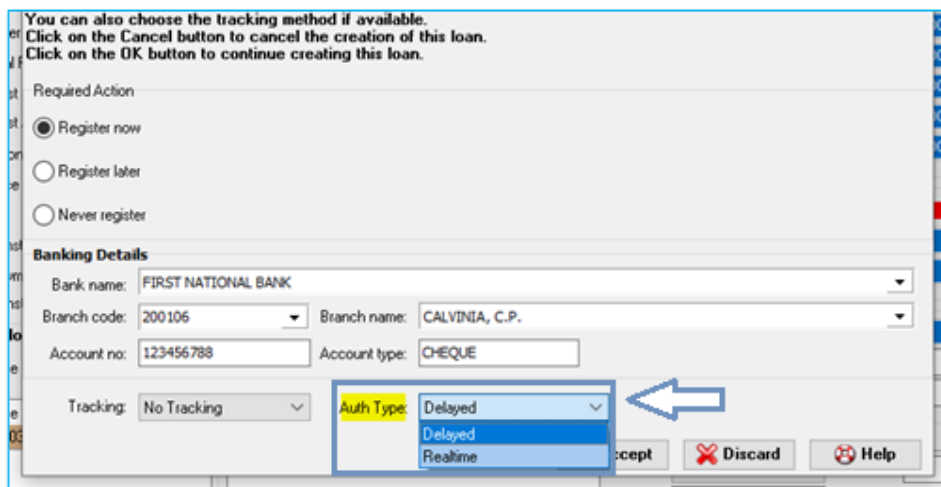
Added the functionality to create a NuPay DebiCheck TT1 Realtime contract, which will follow the standard NuPay TT1 Realtime processes on initiation and the loan status process in Delfin. The following additions and changes were made:

- The repayment method “**NuPay TT1 Delayed**” has been renamed to “**NuPay TT1**”. Both Delayed and Realtime transactions will be recorded on the “NuPay TT1” repayment type.
- A setup setting was added to the CPRAS Setup (Setup > Integration > CPRAS Setup) with label: “**TT1 default auth type**”. This will enable a user to select a default authentication type for new contract registrations, as per figure below:



*The “TT1 default auth type” will default to “Delayed” on update*

- The authentication type can also be selected during the contract registration process. A dropdown menu has been added with label “**Auth Type**” to allow the user to select the authentication type, as per figure below:



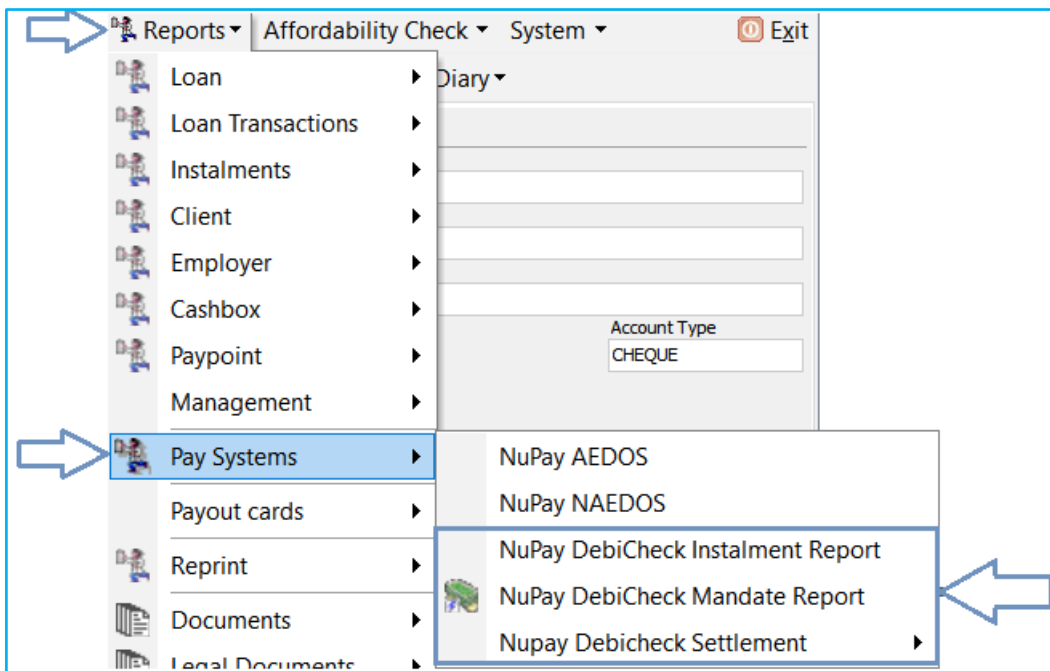
*The option will default to the authentication type selected in the “CPRAS Setup”*



## ☞ NuPay DebiCheck Reports

Added the following NuPay's DebiCheck reports to Reports > Pay Systems:

- NuPay DebiCheck Instalment Report
- NuPay DebiCheck Mandate Report
- NuPay DebiCheck Settlement



*Will only display if DebiCheck TT1 or TT3 is Active in the Setup*

- *NuPay DebiCheck Instalment Report*

### **Filters:**

- From and To Date
- Mandate ID
- Contract Reference
- Client ID Number

### **Report Types:**

- Successful
- Failed
- In Tracking
- Disputed
- Future
- All
- Cancelled



- *NuPay DebiCheck Mandate Report*

**Filters:**

- From and To Date
- Mandate ID
- Contract Reference
- Client ID Number

**Report Types:**

- Active / Future
- Pending Authorisation
- Rejected Authorisation
- Inactive
- Suspended
- All

- *NuPay DebiCheck Settlement Report*

**Types:**

- TT1 – *Will display all transactions for Debicheck (TT1 & TT3)*
- TT3 – *Will display all transactions for Debicheck (TT1 & TT3)*

**Filters:**

- From and To Date

## Settlement Token Additions

Added a new Settlement letter token that can be inserted and used on any document in the Document manager, with label: "Settlement balance including expected late fees"

- **Token label when displayed on Document:**

[Settlement Letter.settlement\_current\_loan\_incl\_late\_fees]

- **Calculation:**

This token will calculate a **single loan's settlement balance** as it would be for **5 days** in the **future** from today's date and include the late interest and late service fee due amounts, as it would be on **month end**.

The late fees will **only be added** if there are any **instalments overdue** on **today's** date. In addition, if the 5 days in future stretches over to the next month, then the late fees due amounts will be calculated as it would be for **the next month end**.



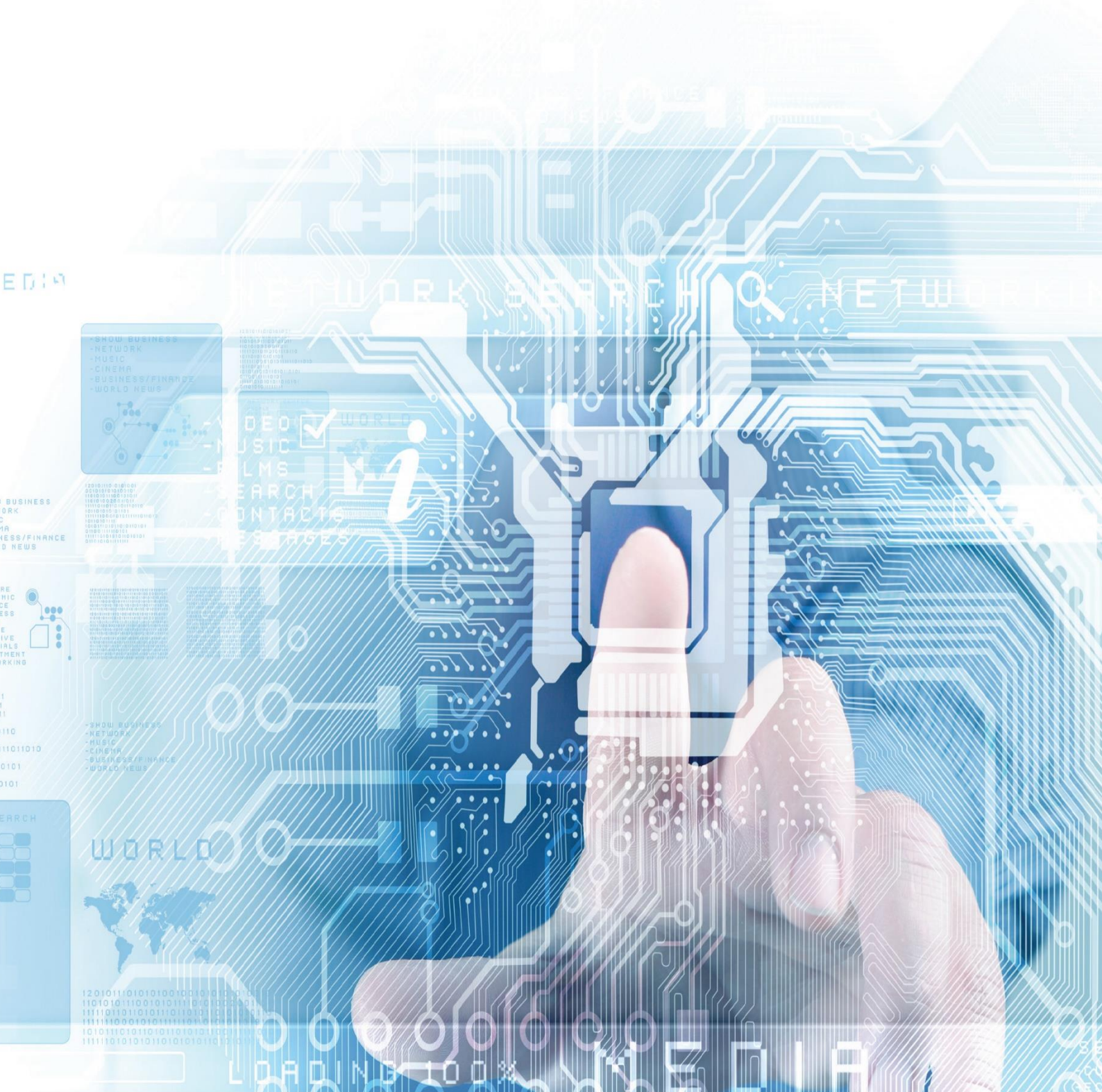
- **Adding Token:**

You can add the token @ Setup > General > Document Manager > New/ Edit Document > Click on data field icon (📄) > Settlement Letter > Settlement balance including expected late fees:

The screenshot shows the Delfin software interface. On the left, the 'Application' menu is open to 'General', and 'Document manager' is highlighted. The 'Document manager' window shows a list of files in 'C:\delfin\train8', with 'Settlement Lett.RTF' selected. The main window displays a 'Settlement Letter' template with the text 'Your settlement balance is: «{Settlement Letter.settlement\_current\_loan\_incl\_late\_fees}»'. A 'Datafield Insert' dialog box is open, showing a list of data fields. The 'Settlement Letter' field is selected, and the 'Settlement balance including expected late fees' option is highlighted. Arrows indicate the navigation path from the 'Document manager' to the 'Datafield Insert' dialog and the selection of the specific data field.

**End of Delfin V8.97 changelog**





# DELTER

A DIVISION OF ALTRON

Contact Details

Tel: +27 12 060 0370

Email: [info@delter.co.za](mailto:info@delter.co.za)

**Physical Address:**

Glenfield Office Park,  
375 Oberon Ave, Block F,  
Fairie Glen, Pretoria, 0081

**Postal Address:**

P.O. Box 70361,  
Die Wilters, 0042

[www.delter.co.za](http://www.delter.co.za)